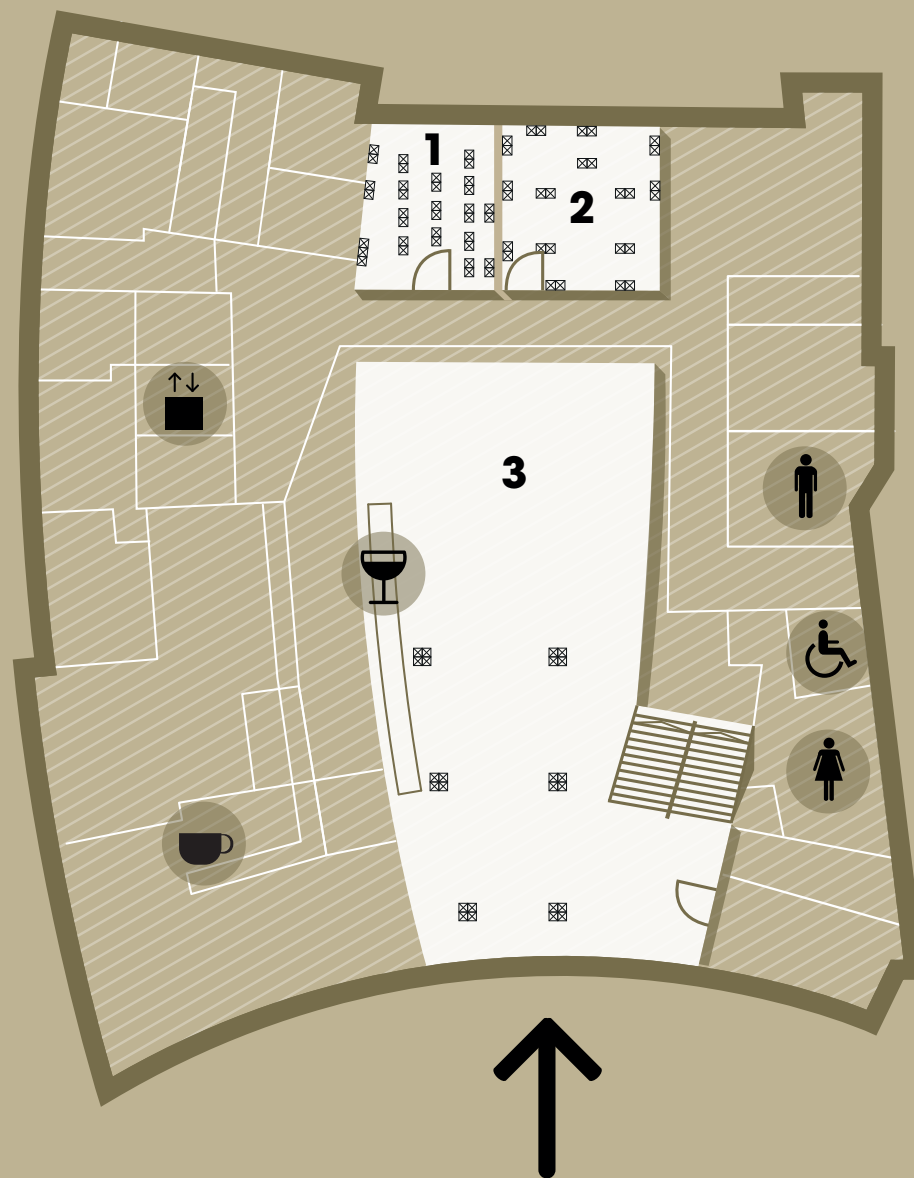




colston hall
Bristol's home of music



-  Lift
-  Men's toilets
-  Women's toilets
-  Disabled toilets
-  Cafe
-  Bar
-  Electrical Point
-  Table

Entrance from Colston Street

Lower ground floor

1 Glass Room: 25m²

W: 6.7m x L: 3.8m x H: 4m

Capacity Standing: 25

Capacity Theatre Style: 25

Capacity Boardroom Style: 14

NOTES: A great space for drinks receptions and ideal if you are watching a foyer performance.

2 Meeting Room 1: 33m²

W: 6m x L: 5.5m x H: 2.5m

Capacity Standing: 40

Capacity Theatre Style: 35

Capacity Boardroom Style: 20

NOTES: Modern and contemporary room ideal for a meeting, training day or seminar. Also perfect as a break room for a large meeting. This room has a fitted plasma screen that can be linked straight to a laptop, ideal for presentations.

3 Lower ground floor foyer: 242m²

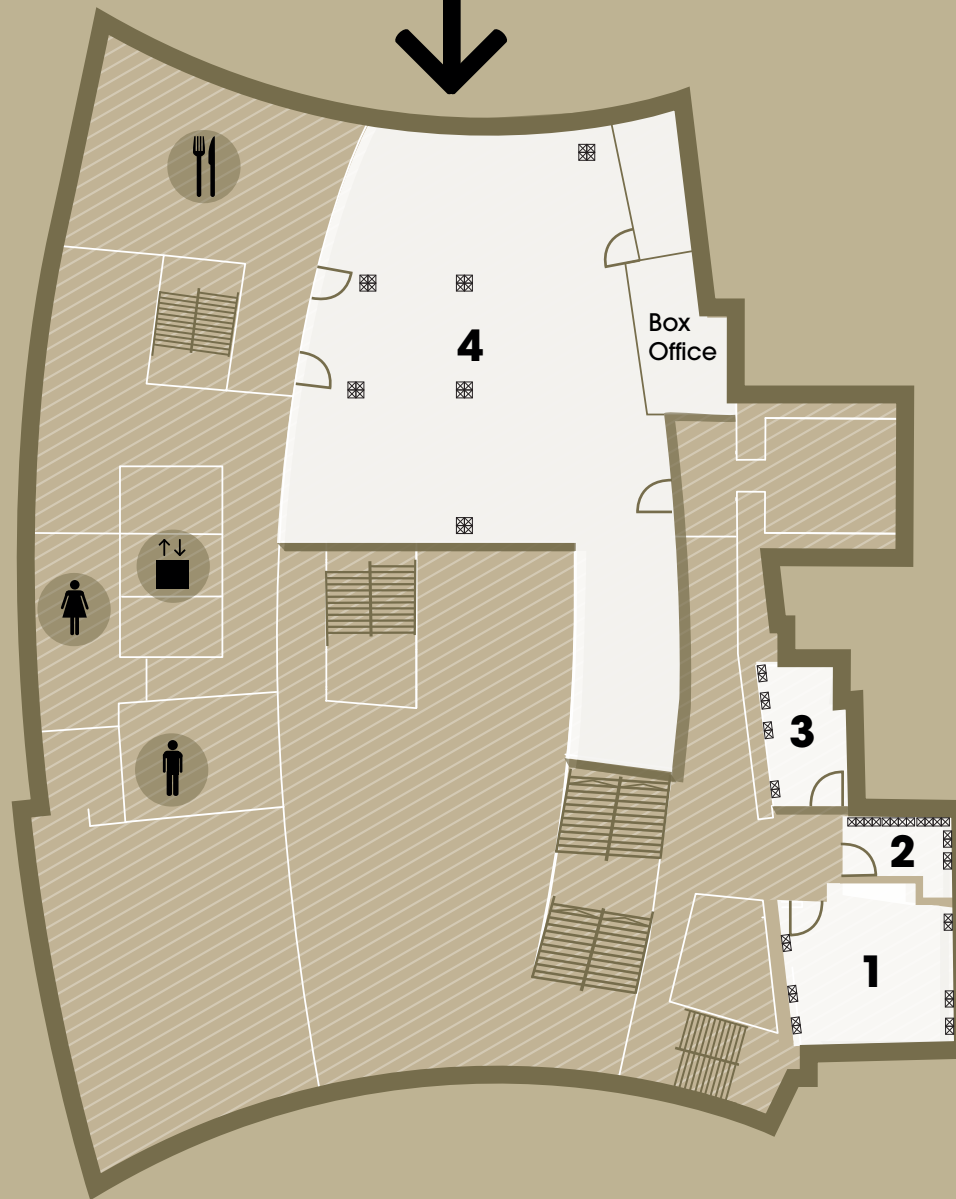
NOTES: Café that is open to the public and a performance stage that has regular shows from local artist around the city.

For further enquiries contact:
commercialevent@colstonhall.org
0117 204 7104



colston hall
Bristol's home of music

Entrance from Trenchard Street



-  Lift
-  Men's toilets
-  Women's toilets
-  Restaurant
-  Electrical Point
-  Table

Ground floor

1 Education 1: 41m²
NOTES: iMac suite

2 Education 2: 14.5m²
NOTES: iMac mini suite

3 Education 3: 16.8m²
NOTES: Workshop space

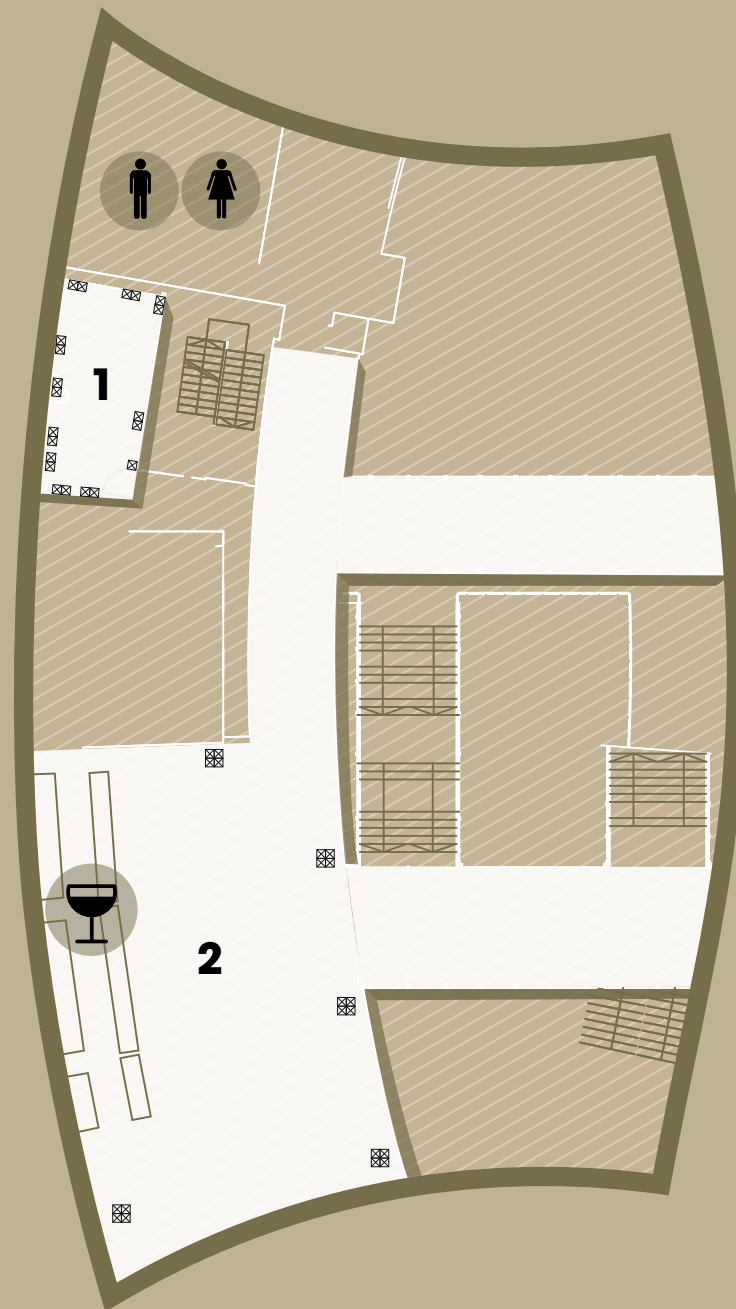
4 Ground floor foyer: 204.8m²

NOTES: The merchandise counter is situated in this area is also the perfect space for guest registration.

For further enquiries contact:
commercialevent@colstonhall.org
0117 204 7104



colston hall
Bristol's home of music



-  Men's toilets
-  Women's toilets
-  Bar
-  Electrical Point
-  Table

First floor

1 Meeting Room 2: 29m²

W: 8m x L: 3.5m x H: 2.5m
Capacity Standing: 40
Capacity Theatre Style: 25
Capacity Boardroom Style: 16

NOTES: Modern and contemporary room ideal for a meeting, training day or seminar. Also perfect as a break room for a large meeting. This room has a fitted plasma screen that can be linked straight to a laptop, ideal for presentations.

2 Stalls Bar: 192m²

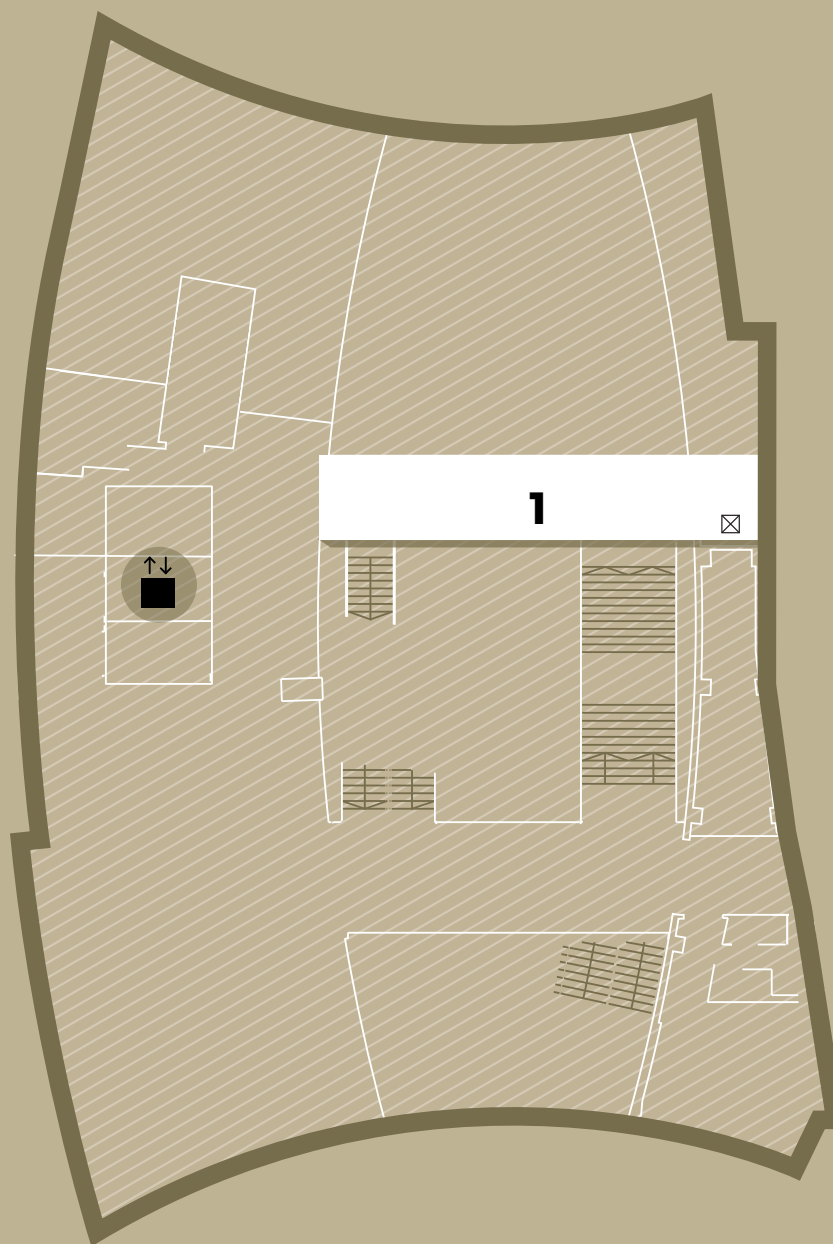
W: 17.5m x L: 8.5m x H: 7m
Capacity Standing: 300
Capacity Cabaret Style: 80
Capacity Theatre Style: 120
Capacity Café Style: 80

NOTES: This contemporary open plan bar is a flexible space. It is the main landing.

For further enquiries contact:
commercialevent@colstonhall.org
0117 204 7104



colston hall
Bristol's home of music



Lift



Electrical Point



Table

Second floor

1 Bridge C: 41m²

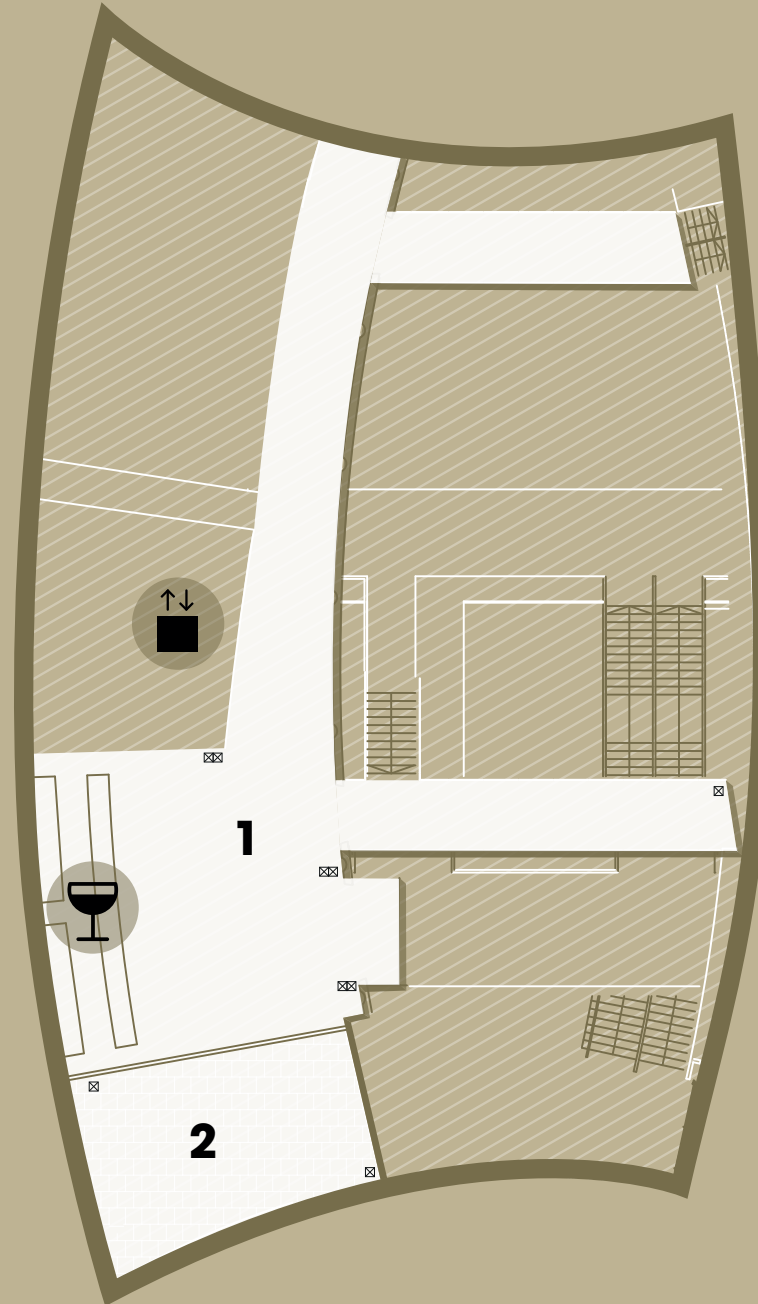
NOTES: Access to the balcony through door C.

For further enquiries contact:
commercialevent@colstonhall.org
0117 204 7104



colston hall

Bristol's home of music



Third floor

1 Terrace Bar: 92m²

W: 11m x L: 8.5m x H: 4m

Capacity Standing: 200

Capacity Cabaret Style: 64

Capacity Theatre Style: 100

Capacity Café Style: 55

NOTES: Situated at the top of the building with views across the city this space is perfect for an evening drinks reception, networking event or seminar. There is an abundance of natural daylight flooding in from the patio doors which give you direct access to the balcony. This large space with a fully functioning bar is the ideal location to relax and take in the views of Bristol.

2 Terrace: 67m²

W: 10.3m x L: 6.6m

Capacity Standing: 50

Capacity Café Style: 36



Lift



Bar



Electrical Point



Table

For further enquiries contact:
commercialevent@colstonhall.org
0117 204 7104