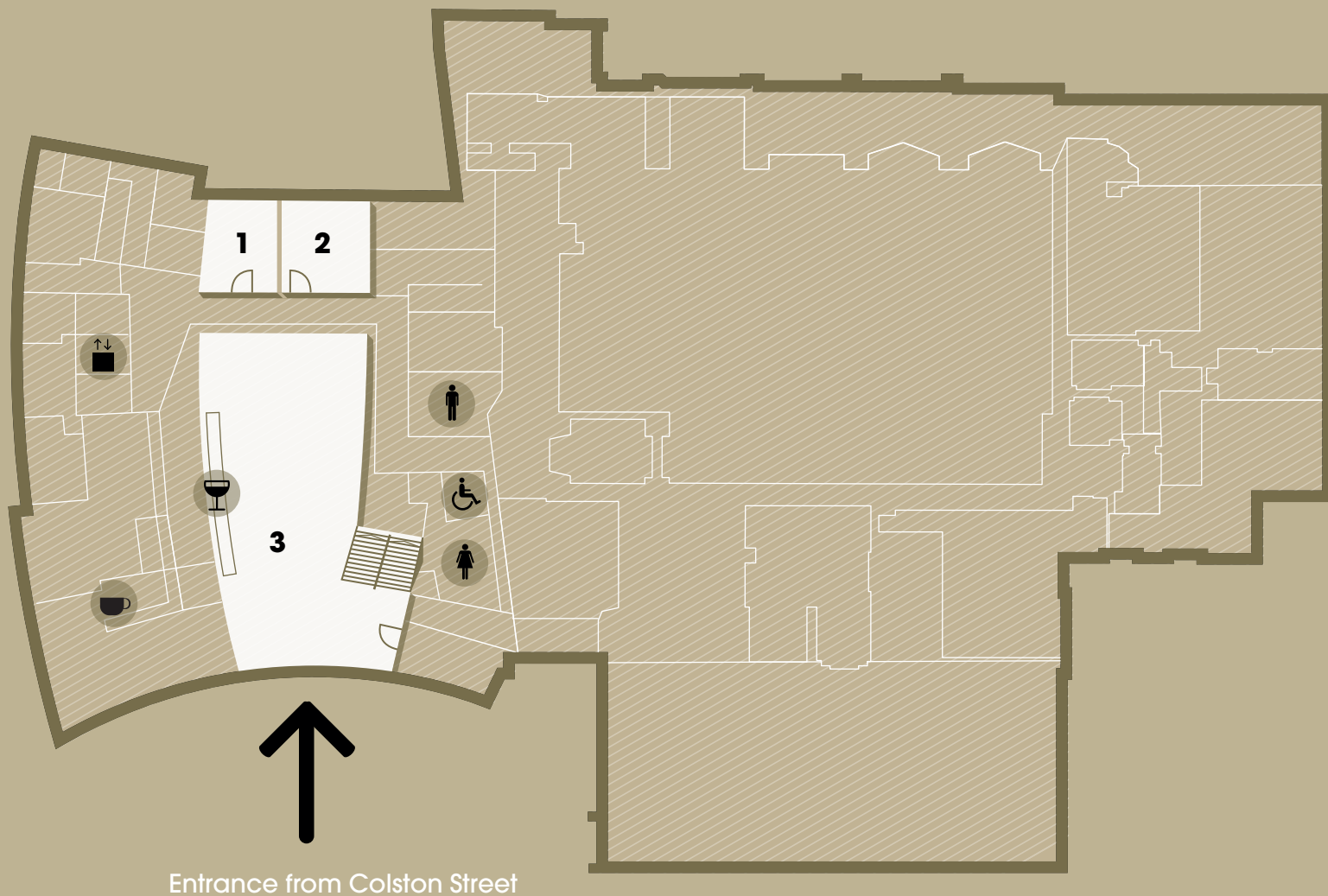




colston hall
Bristol's home of music



Lower ground floor

1 Glass Room

NOTES: A great space for drinks receptions and ideal if you are watching a foyer performance

2 Meeting Room 1

NOTES: Modern and contemporary room ideal for a meeting, training day or seminar. Also perfect as a break room for a large meeting. This room has a fitted plasma screen that can be linked straight to a laptop, ideal for presentations

3 Lower ground floor foyer

NOTES: Café that is open to the public and a performance stage that has regular shows from local artist around the city



Lift



Men's toilets



Women's toilets



Disabled toilets



Cafe

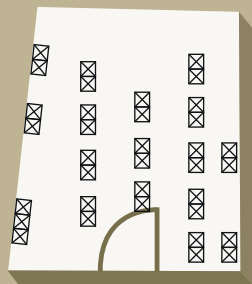


Bar

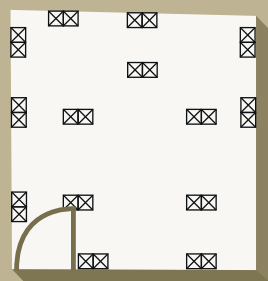
For further enquiries contact:
naomi.easy@colstonhall.org
0117 204 7104



colston hall
Bristol's home of music

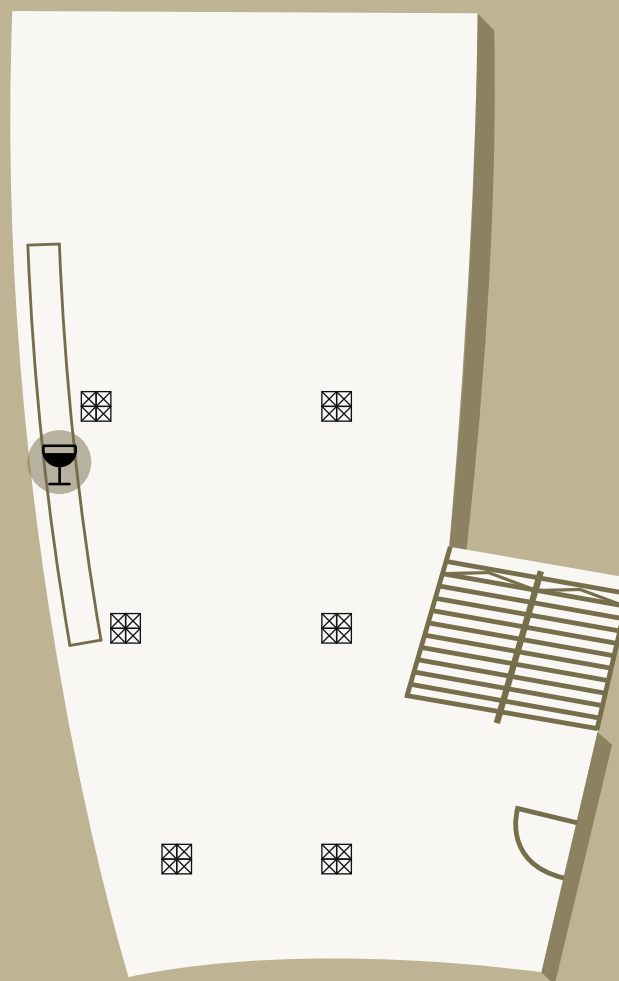


1



2

3



Lower ground floor details

1 Glass Room: 25m²
W: 6.7m x L: 3.8m x H: 4m
Capacity Standing: 25
Capacity Theatre Style: 25
Capacity Boardroom Style: 14

2 Meeting Room 1: 33m²
W: 6m x L: 5.5m x H: 2.5m
Capacity Standing: 40
Capacity Theatre Style: 35
Capacity Boardroom Style: 20

**3 Lower ground floor foyer:
242m²**



Bar

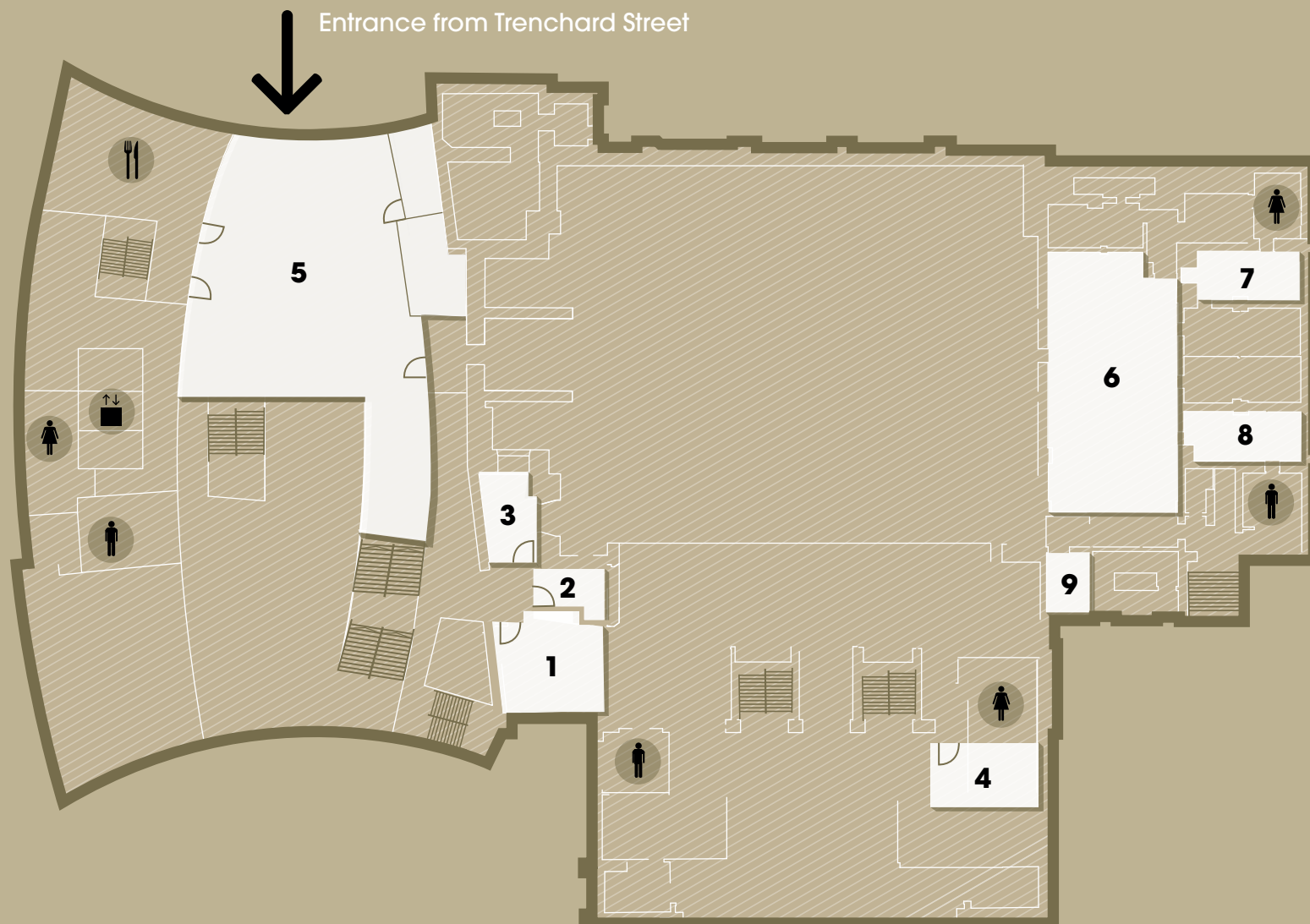


Electrical Point

For further enquiries contact:
naomi.easy@colstonhall.org
0117 204 7104



colston hall
Bristol's home of music



Ground floor plan

1 Education 1

NOTES: iMac suite

2 Education 2

NOTES: iMac mini suite

3 Education 3

NOTES: Workshop space

4 Board Room

NOTES: A classic room that encompasses all the history of the Hall with a fireplace and wood panelled walls. The boardroom is the ideal space for more intimate meetings. Please note this room is not accessible for wheelchair users.

5 Ground floor foyer

NOTES: The merchandise counter is situated in this area is also the perfect space for guest registration

6 Green room

7 Female Changing room

8 Male Changing room

9 Kitchen



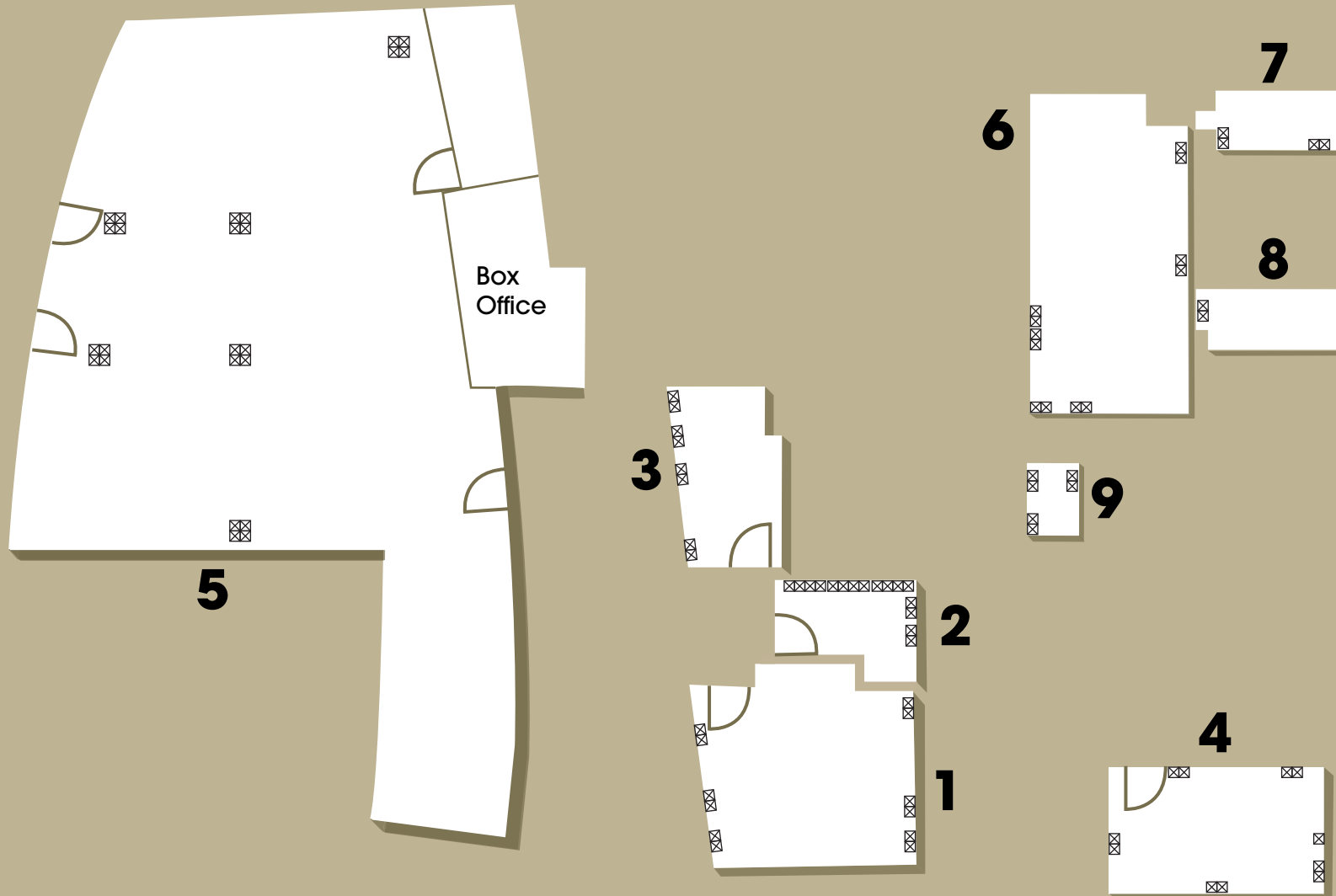
Restaurant

For further enquiries contact:
naomi.easy@colstonhall.org
0117 204 7104



colston hall

Bristol's home of music



Ground floor details

- 1** Education 1: 41m²
- 2** Education 2: 14.5m²
- 3** Education 3: 16.8m²
- 4** Board Room: 28.3m²
- 5** Ground floor foyer: 204.8m²
- 6** Green room: 127.2m²
- 7** Female Changing room: 127.2m²
- 8** Male Changing room: 127.2m²
- 9** Kitchen

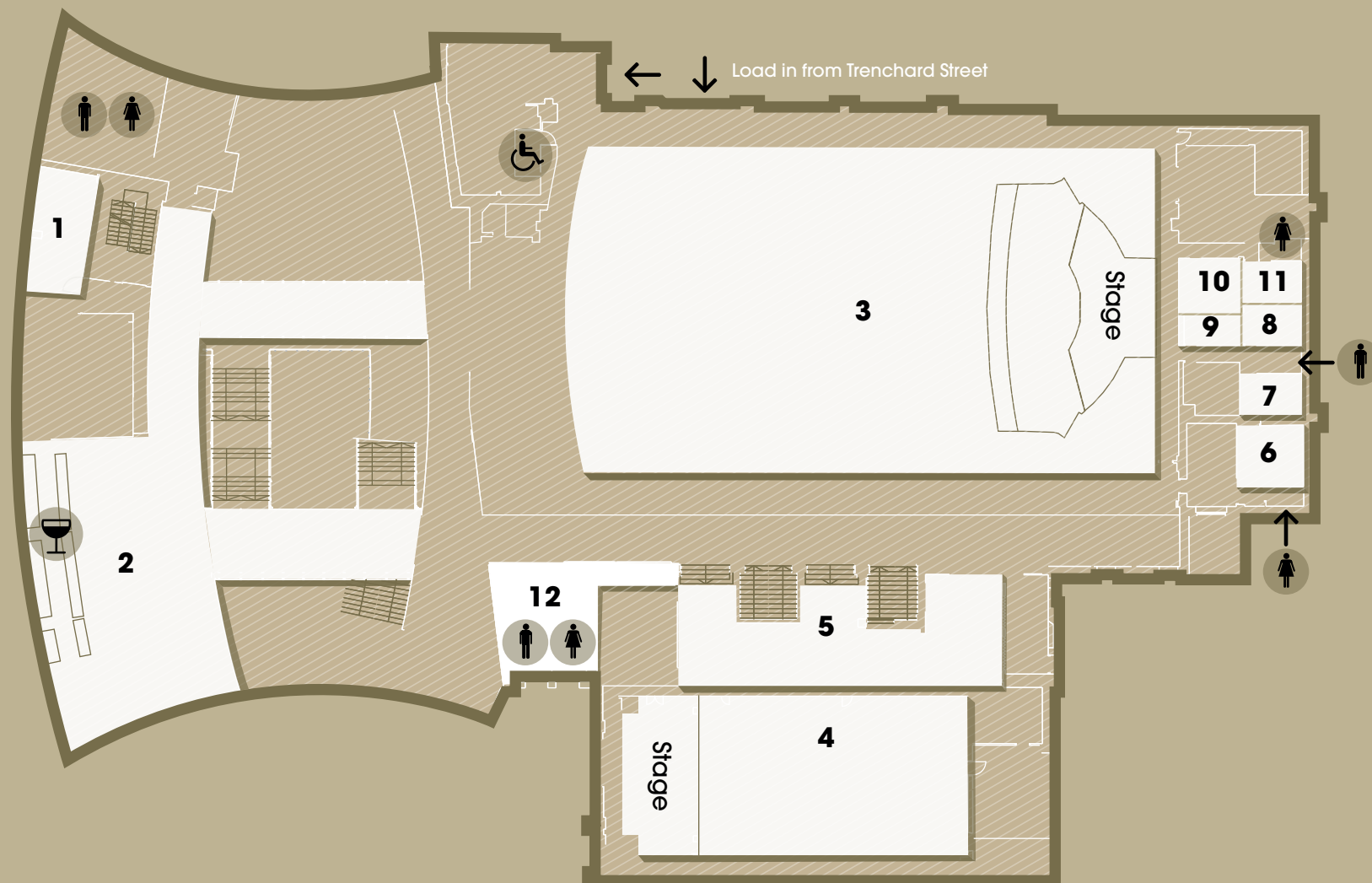


Electrical Point

For further enquiries contact:
naomi.easy@colstonhall.org
0117 204 7104



colston hall
Bristol's home of music



First floor

1 Meeting Room 2

NOTES: Modern and contemporary room ideal for a meeting, training day or seminar. Also perfect as a break room for a large meeting. This room has a fitted plasma screen that can be linked straight to a laptop, ideal for presentations.

2 Stalls Bar

NOTES: This contemporary open plan bar is a flexible space. It is the main landing.

3 Hall 1

NOTES: Our main auditorium has a fully seated capacity of 1834, the Hall can also accommodate 1900 in a part standing format. It is a flexible space and regularly hosts world class performances and events across many different genres.

4 The Lantern

NOTES: A beautiful high-ceilinged room situated within the classic surroundings of the old building.

5 The Lantern Foyer

6 Dressing room 1

7 Dressing room 2

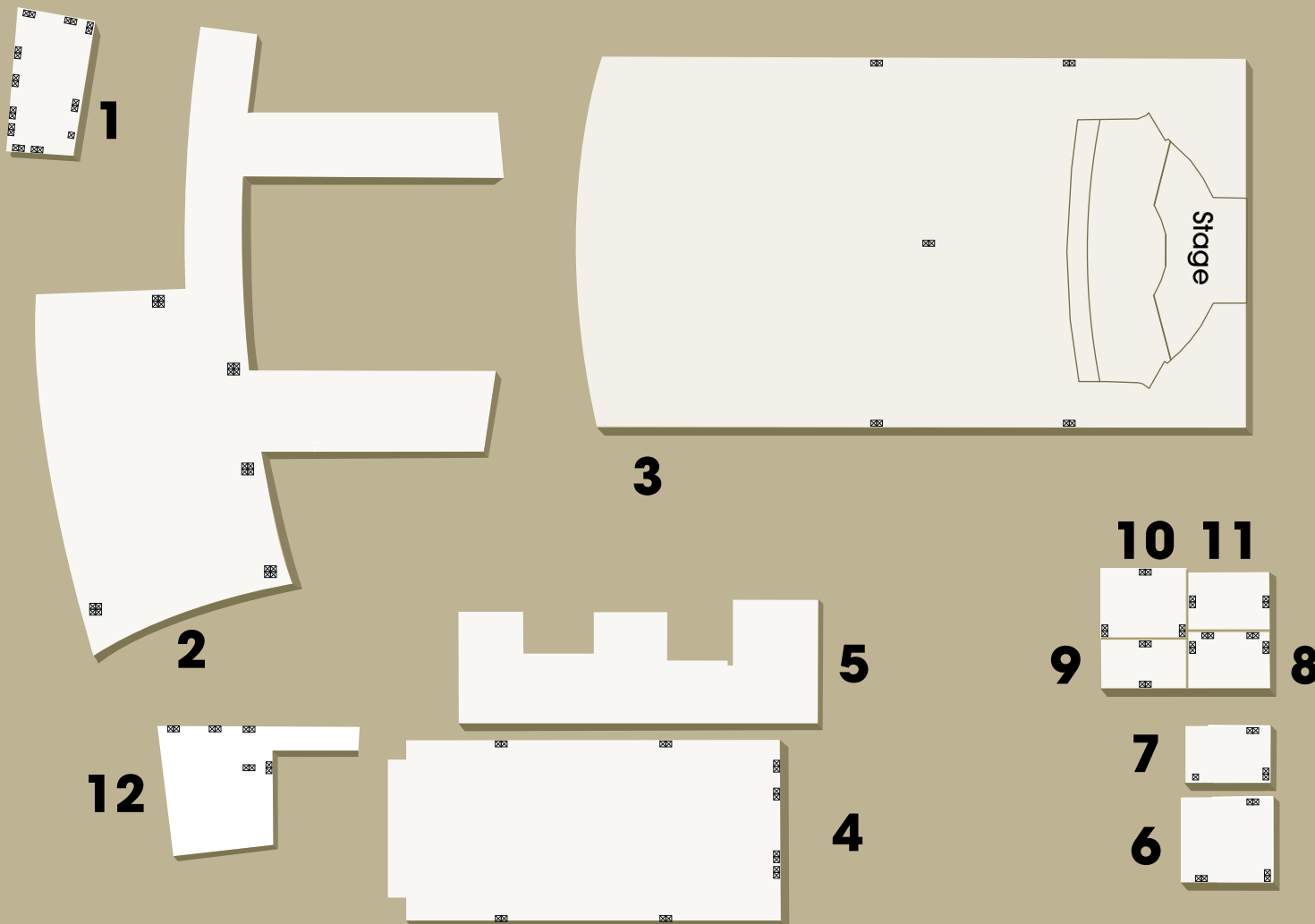
8 Dressing room 3

9 Dressing room 4

10 Dressing room 5

11 Dressing room 6

12 Lantern dressing room



First floor details

1 Meeting Room 2: 29m²

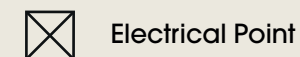
W: 8m x L: 3.5m x H: 2.5m
Capacity Standing: 40
Capacity Theatre Style: 25
Capacity Boardroom Style: 16

2 Stalls Bar: 192m²

W: 17.5m x L: 8.5m x H: 7m
Capacity Standing: 300
Capacity Cabaret Style: 104
Capacity Theatre Style: 120
Capacity Café Style: 80

4 The Lantern: 200m²

W: 20m x L: 10m x H: 10m
Capacity Standing: 350
Capacity Cabaret Style: 120
Capacity Theatre Style: 250
Capacity Boardroom Style: 60
Capacity Café Style: 60



For further enquiries contact:
naomi.easy@colstonhall.org
0117 204 7104



colston hall
Bristol's home of music



Second floor plan

1 Bridge C

NOTES: Access to the balcony through door C



Lift



Men's toilets

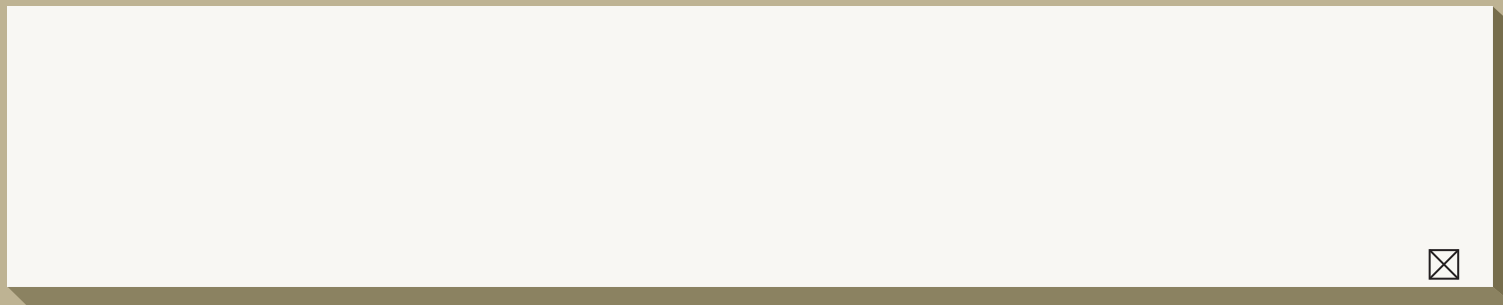


Women's toilets

For further enquiries contact:
naomi.easy@colstonhall.org
0117 204 7104



colston hall
Bristol's home of music



1

Second floor details

1 Bridge C: 41m²

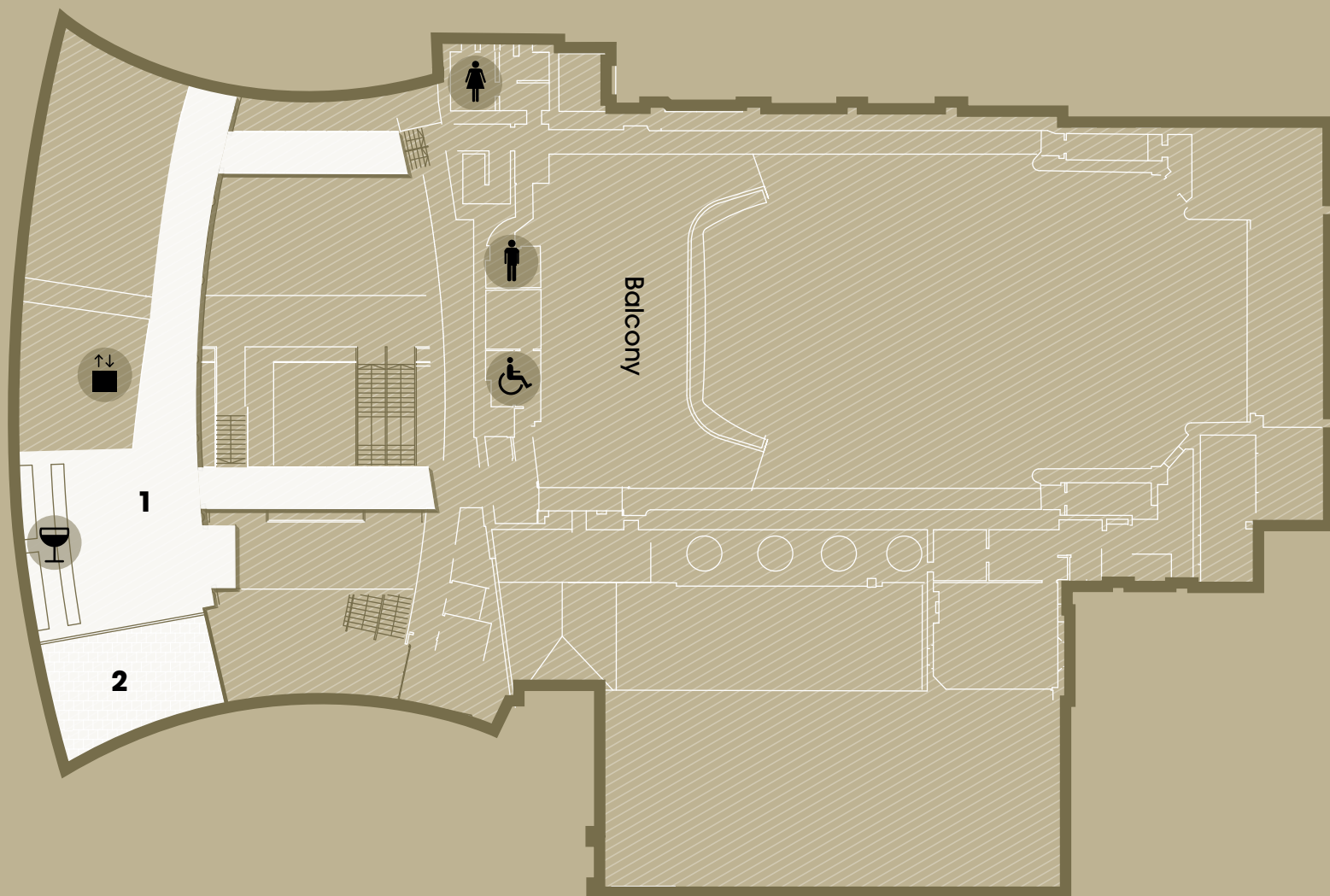


Electrical Point

For further enquiries contact:
naomi.easy@colstonhall.org
0117 204 7104



colston hall
Bristol's home of music



Third floor

1 Terrace Bar

NOTES: Situated at the top of the building with views across the city this space is perfect for an evening drinks reception, networking event or seminar. There is an abundance of natural daylight flooding in from the patio doors which give you direct access to the balcony. This large space with a fully functioning bar is the ideal location to relax and take in the views of Bristol.

2 Terrace



Lift



Men's toilets



Women's toilets



Disabled toilets

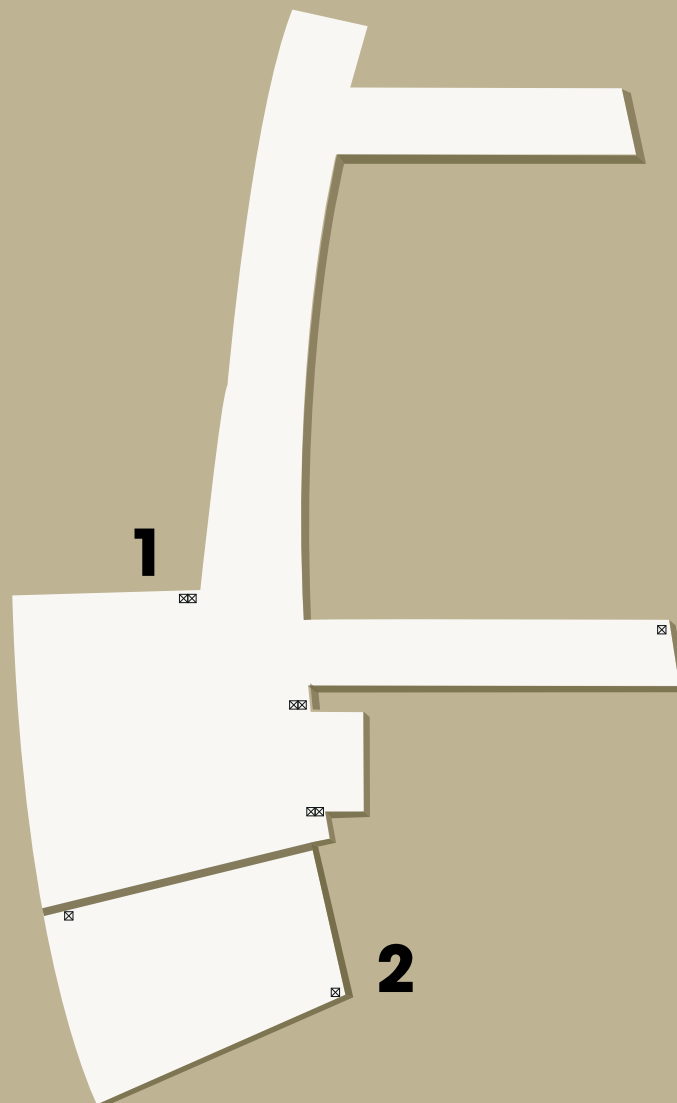


Bar

For further enquiries contact:
naomi.easy@colstonhall.org
0117 204 7104



colston hall
Bristol's home of music



Third floor details

1 Terrace Bar: 92m²

W: 11m x L: 8.5m x H: 4m

Capacity Standing: 200

Capacity Cabaret Style: 64

Capacity Theatre Style: 100

Capacity Café Style: 55

2 Terrace: 67m²

W: 10.3m x L: 6.6m

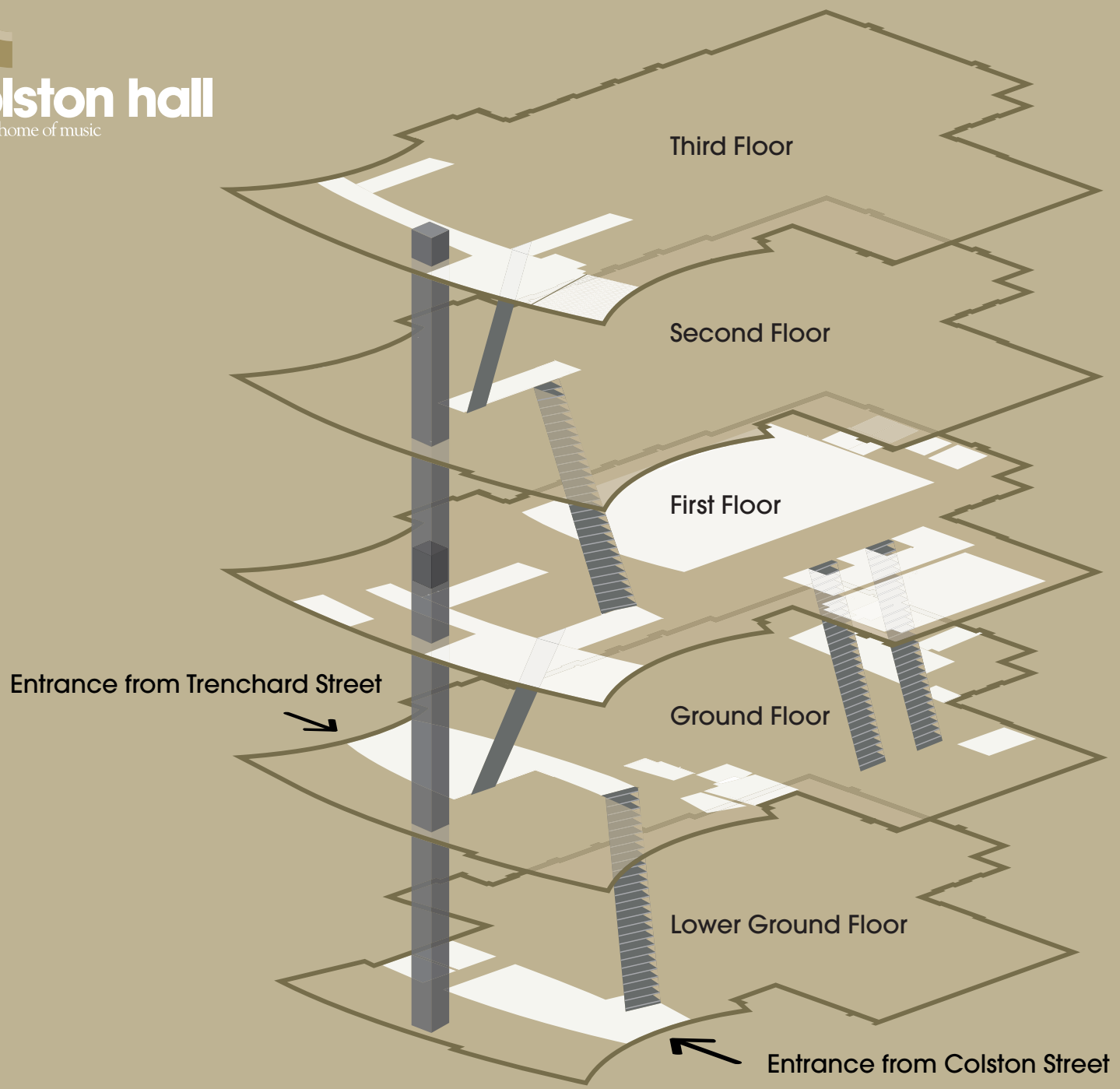
Capacity Standing: 50

Capacity Café Style: 36

 Electrical Point

 Table

For further enquiries contact:
naomi.easy@colstonhall.org
0117 204 7104



Floor access overview




Lower Ground Floor
Three spaces available

Ground Floor
Ten spaces available

First Floor
Eleven spaces available

Second Floor
One spaces available

Third Floor
Two spaces available

-  Entrance
-  Stairs
-  Lift

For further enquiries contact:
naomi.easy@colstonhall.org
0117 204 7104